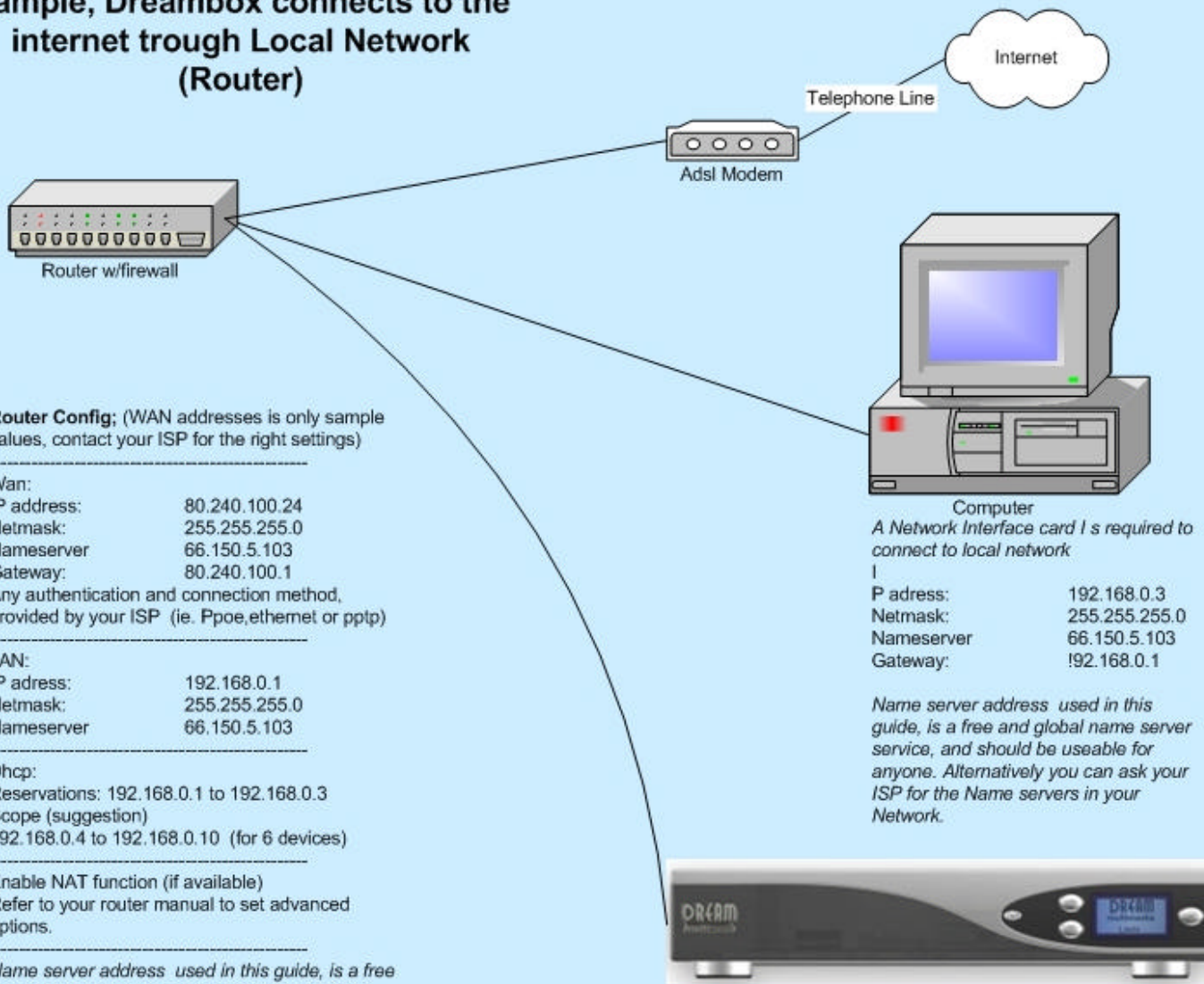


# How to share your internet connection with Dreambox (ADSL)

© <http://nsf.ligthing.com/forum>

## Sample, Dreambox connects to the internet trough Local Network (Router)



**Router Config;** (WAN addresses is only sample values, contact your ISP for the right settings)

Wan:  
 IP address: 80.240.100.24  
 Netmask: 255.255.255.0  
 Nameserver 66.150.5.103  
 Gateway: 80.240.100.1  
 Any authentication and connection method, provided by your ISP (ie. Ppoe,ethernet or pptp)

LAN:  
 IP address: 192.168.0.1  
 Netmask: 255.255.255.0  
 Nameserver 66.150.5.103

Dhcp:  
 Reservations: 192.168.0.1 to 192.168.0.3  
 Scope (suggestion)  
 192.168.0.4 to 192.168.0.10 (for 6 devices)

Enable NAT function (if available)  
 Refer to your router manual to set advanced options.

*Name server address used in this guide, is a free and global name server service, and should be useable for anyone. Alternatively you can ask your ISP for the Name servers in your Network.*

**Computer**  
*A Network Interface card is required to connect to local network*  
 IP address: 192.168.0.3  
 Netmask: 255.255.255.0  
 Nameserver 66.150.5.103  
 Gateway: 192.168.0.1

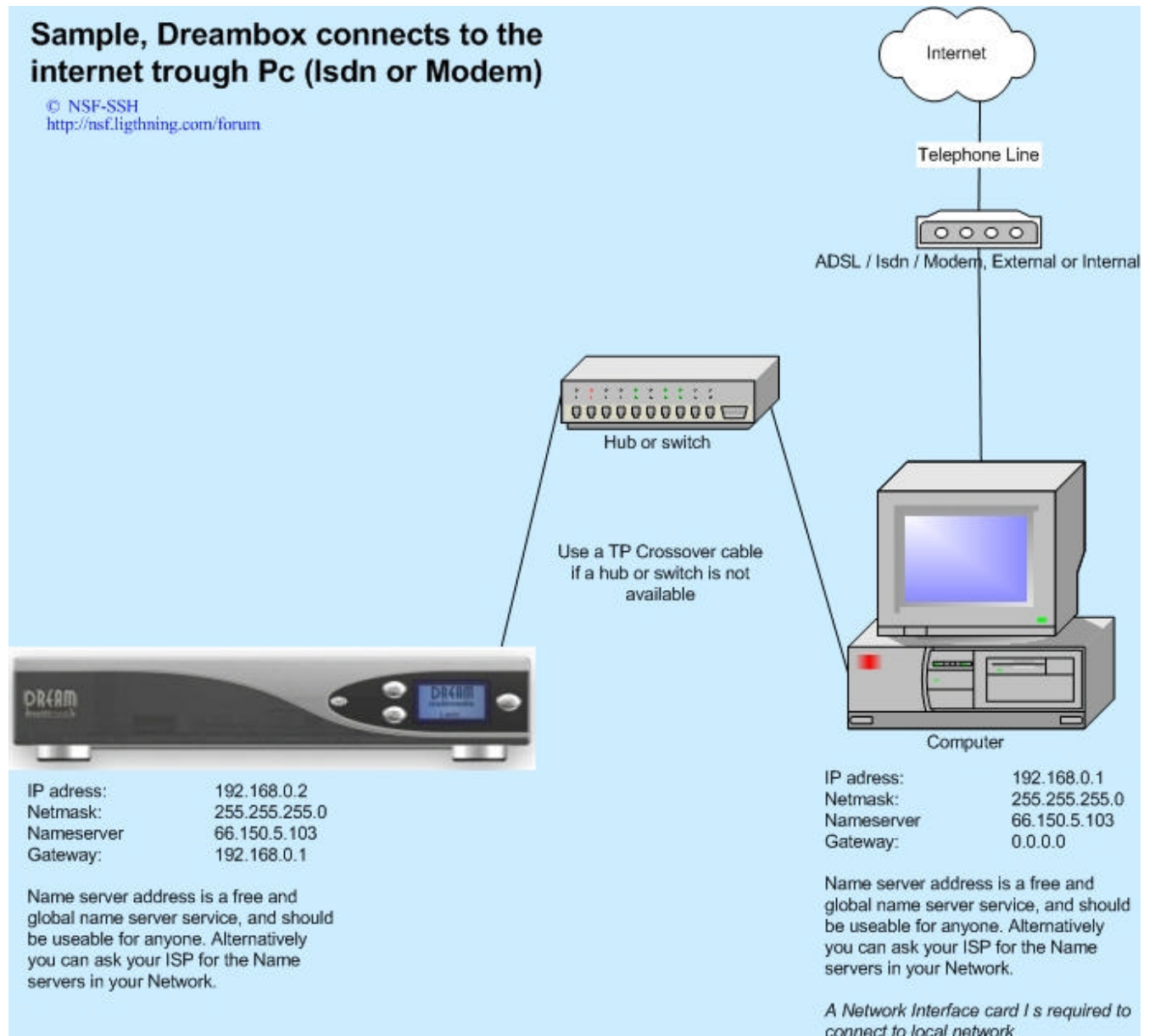
*Name server address used in this guide, is a free and global name server service, and should be useable for anyone. Alternatively you can ask your ISP for the Name servers in your Network.*

**Dreambox**  
 IP address: 192.168.0.2  
 Netmask: 255.255.255.0  
 Nameserver 66.150.5.103  
 Gateway: 192.168.0.1

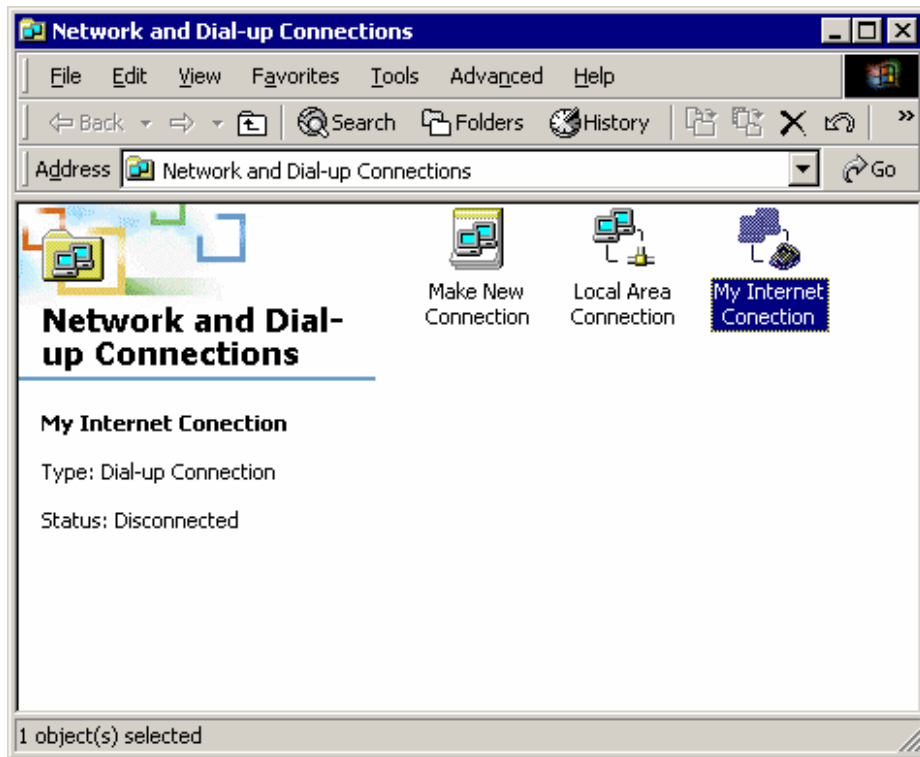
*Name server address used in this guide, is a free and global name server service, and should be useable for anyone. Alternatively you can ask your ISP for the Name servers in your Network.*

© NSF-SSH  
<http://nsf.ligthing.com/forum>

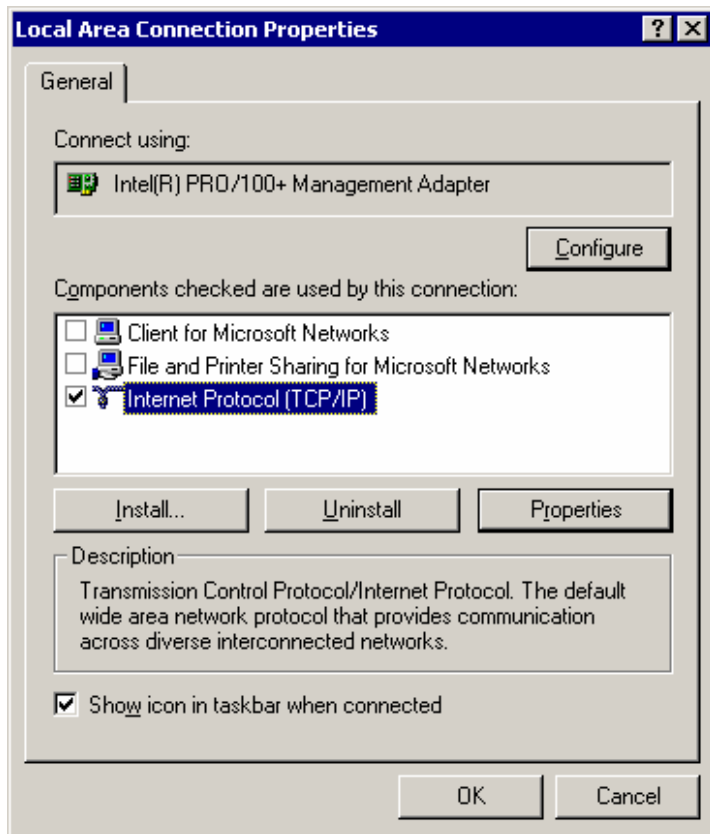
## How to share your internet connection with Dreambox (ISDN / MODEM)



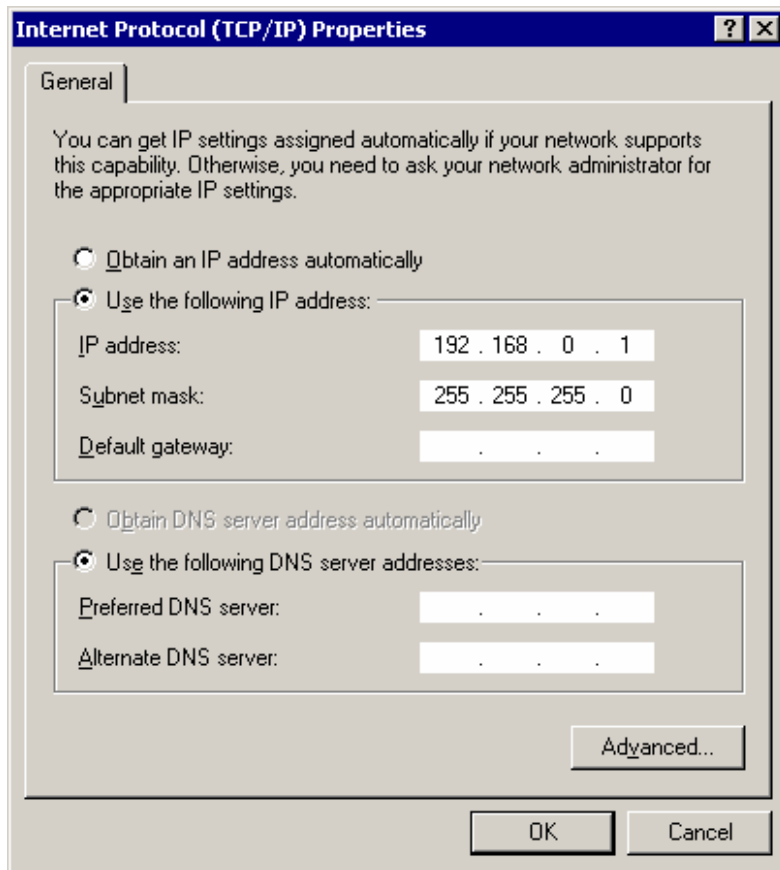
First, open network and dialup connections, right click *local area connection*, select *properties*



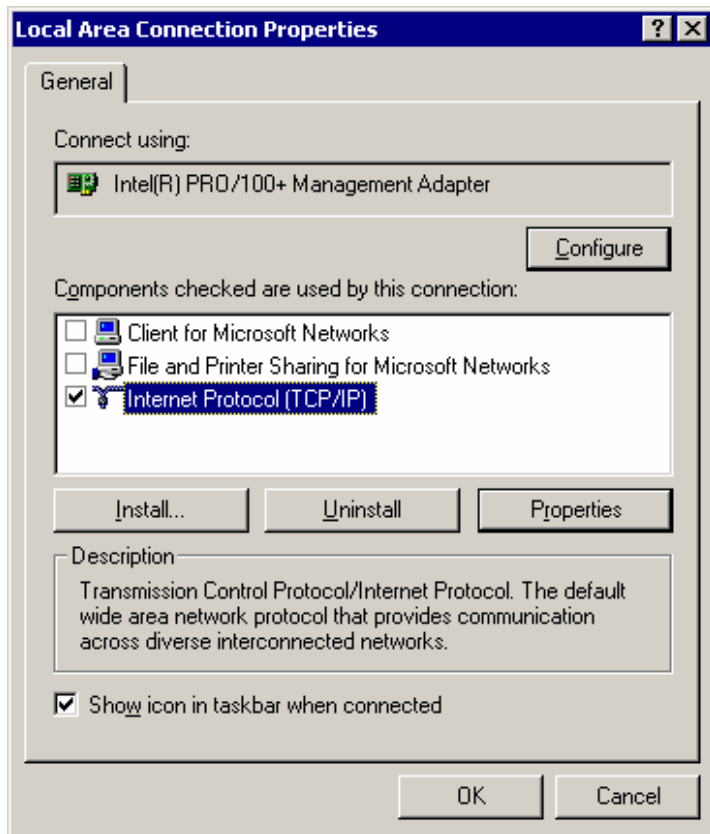
Highlight *Internet Protocol (TCP/IP)*, click properties



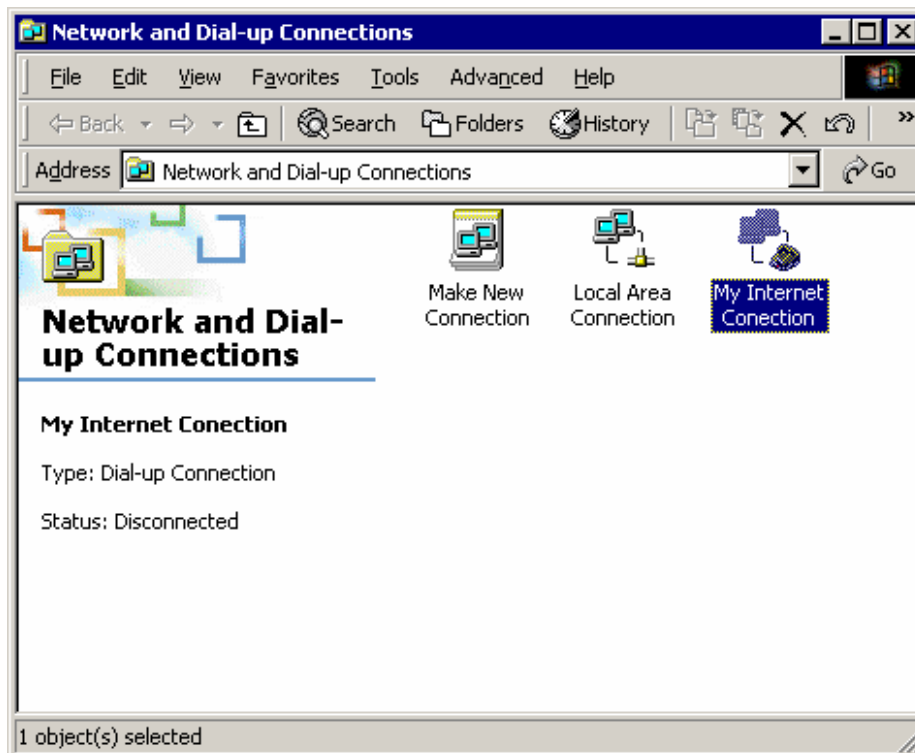
Enter selected Ip address and subnet mask, click OK



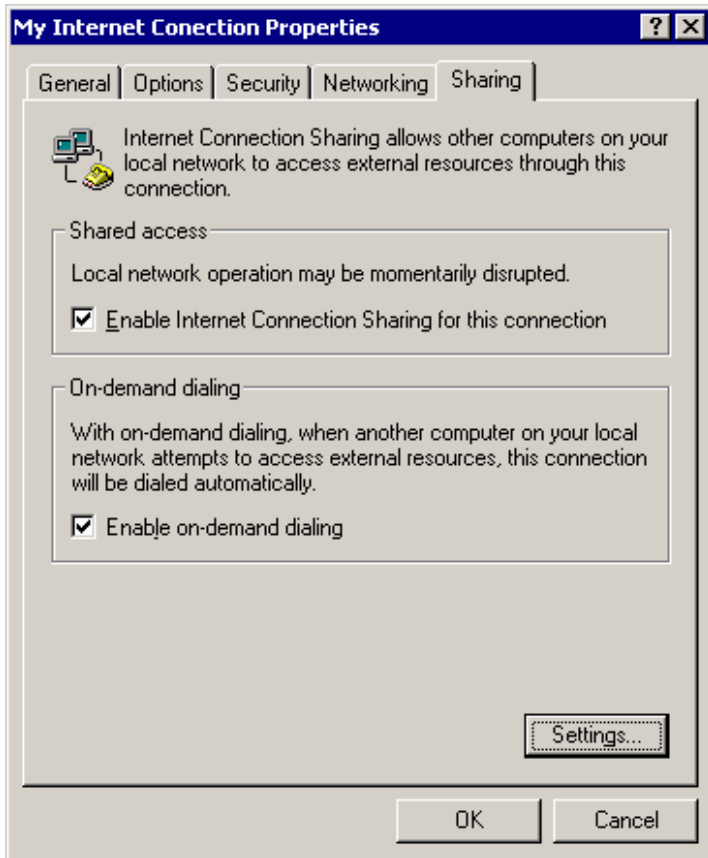
Click OK again



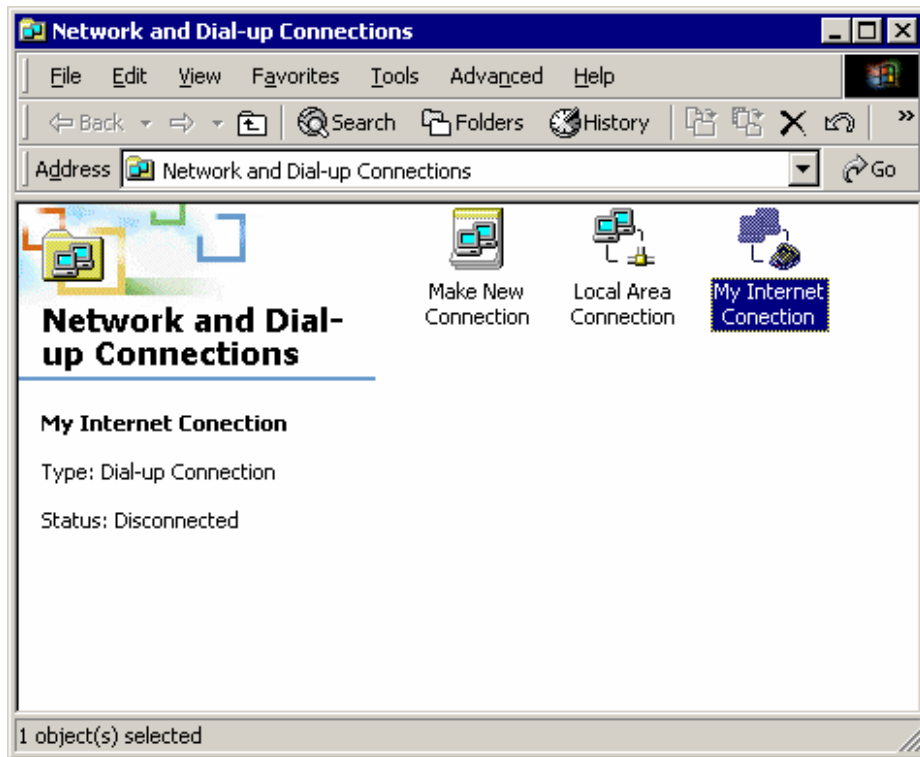
right click "My Internet connection", select *properties*



Select the "sharing" tab, Click to enable *Shared access* and *On demand dialing*.  
Click OK



Now Close the window



© <http://nsf.ligthing.com/forum>